



SA520 WOMENS SCRUB TOPS

Article No. 38213SA520

Semi-round Crossover V-neck scrub top is the perfect combination of function and fashion! Built with two multi-functional lower front pockets with multiple compartments. The easy-care, wash and wear fabric provides you with superior softness and incredible comfort all shift long. Available in variety of colors and customization options.



COMPOSITION

Fabric: 55% Cotton, 45% Polyester Poplin
Weight: 160 GSM

STYLE & DESIGN

- Womens comfort fit
- Semi-round Crossover V-neckline style
- Short sleeve length
- 3" Vents/slit on side for comfort
- Two subdivided lower patch pockets
- Second layer utility pocket with angled openings
- Label twill tape loop inside right pocket
- Lightweight & durable construction

COLORS



SIZES

XXS S M L XL 2XL 3XL

Perfect Match with Womens Scrub Pants

Article Number
39213SA525

Sizes
XXS to 3XL



PPE CUSTOMIZATION PROGRAM



A PRODUCT OF



Doc. Control:	Rev.:	Date:
	3.2	April 7, 2016

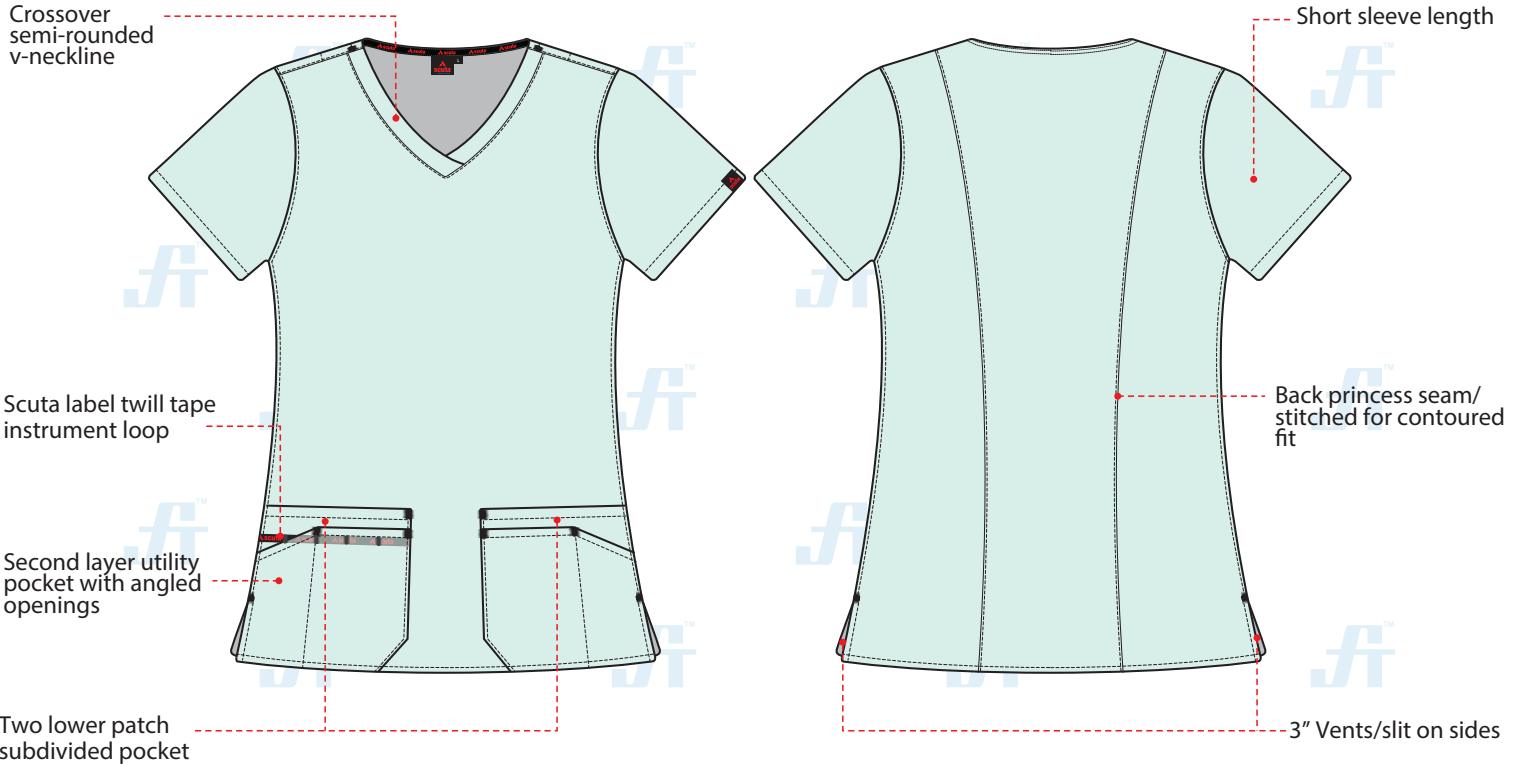
This Article Data Sheet (ADS) is designed and produced by FLOWTRONIX (FT) covered under the intellectual property law. Any reproduction in whole or in part is strictly prohibited without written approval. FT IW 7110-3.2



SA520 WOMENS SCRUB TOPS

Article No. 38213SA520

STYLE & DESIGN SPECIFICATIONS



COLORS



PPE CUSTOMIZATION PROGRAM



- Style and colour as per Client's requirements can be produced
- Name badge/ Designation/Logo placement

SIZE CHART

XXS S M L XL 2XL 3XL

PACKING

Each piece in polythene cover and 20 pcs. in seaworthy carton

Doc. Control:	Rev.: 3.2	Date: April 7, 2016
---------------	-----------	---------------------

This Article Data Sheet (ADS) is designed and produced by FLOWTRONIX (FT) covered under the intellectual property law. Any reproduction in whole or in part is strictly prohibited without written approval. FT IW 7110-3.2

