



WINTER JACKET

Article No.: 0304SA62

Scuta® Winter Jacket is a windproof and breathable jacket that makes you work comfortably during cold weather condition. Built with a blended fabric inner shell that keeps you in comfort and ease. It has durable zipper and snap button closures on front. Detachable hood, elastic waistband, adjustable cuffs and two front pockets with zipper.



COMPOSITION

A functional windproof and breathable Winter Jacket, perfect for working outdoors.

- Blend: 65% Polyester & 35% Cotton.
- Outer Shell: Polyester Cotton / 8.5 Oz. Twill
- Inner Shell: Blended fabric, stitched with Persona™ retainer lining (a wind barrier feature that keep you warm in the coldest of conditions). Quilted at a distance of 2 sq. inches.

STYLE & DESIGN

- Garment is fully double stitched
- Two front lower side slant pockets
- One inside pocket
- 2 Slots pen pocket on left sleeve
- Adjustable cuffs with metallic snap button
- Elasticated waistband
- Heavy duty jacket zipper with snap button & flap closure
- Detachable or Roll on hood

KEY FEATURES



• Ergonomic Fit



• Windproof



• UV Protection



• Breathable



• Anti-pilling



• Keep warm in cold conditions



• Excellent Colorfastness



• Detachable Hood



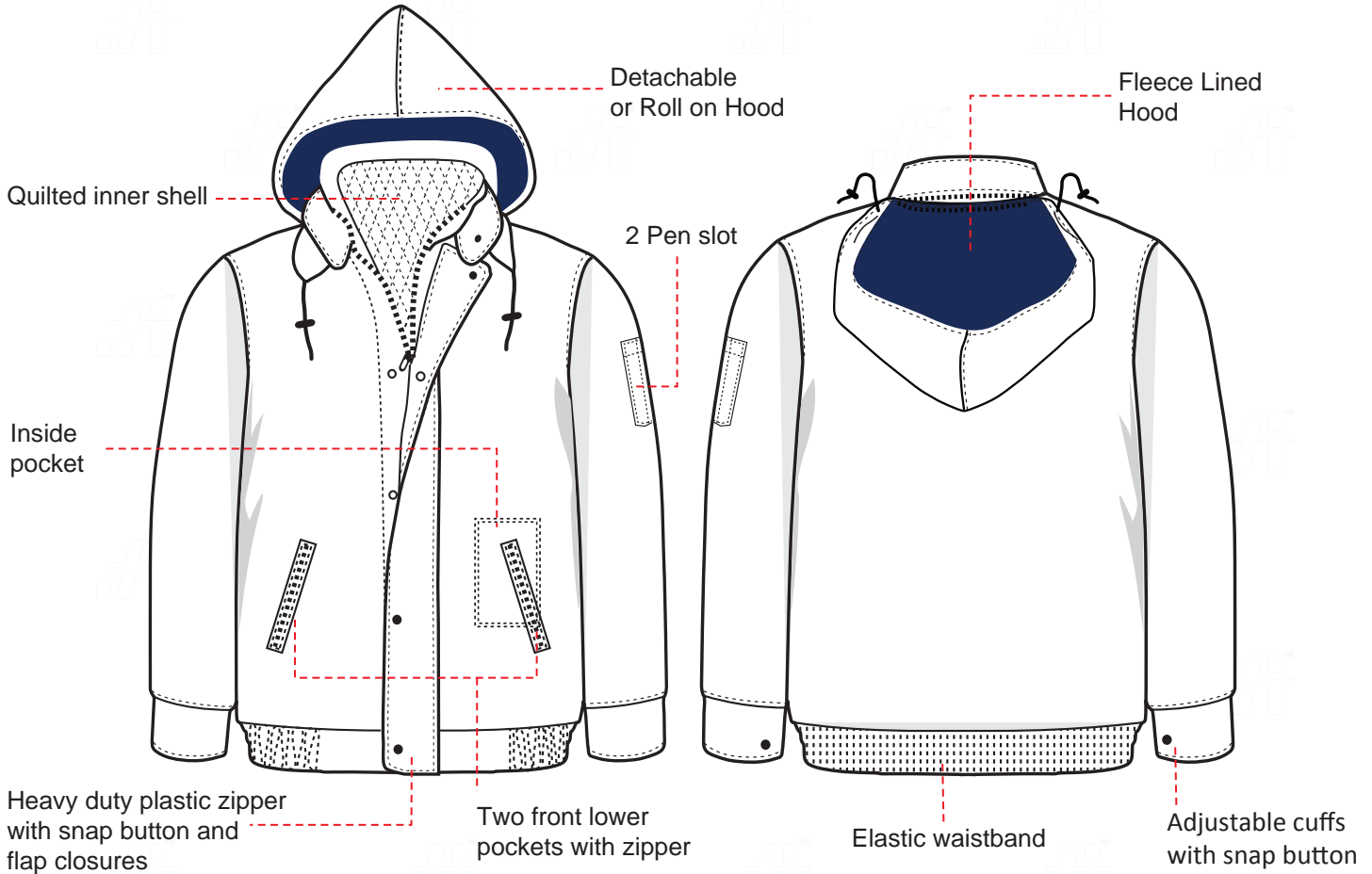
PPE CUSTOMIZATION PROGRAM

Doc. Control:	Rev.:	Date:
	3.2	April 6, 2016

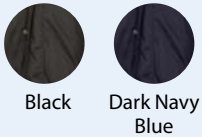
This Article Data Sheet (ADS) is designed and produced by FLOWTRONIX (FT) covered under the intellectual property law. Any reproduction in whole or in part is strictly prohibited without written approval. FT IW 7006-3.2



STYLE & DESIGN SPECIFICATIONS



COLOURS



SIZE CHART

SIZES	UNIT	S 32-34	M 40-42	L 44-46	XL 48-50	2XL 52-54	3XL 56-58	4XL 60-62
A. Chest	in	23	24.5	26	27.5	29	30.5	32
B. Back length	in	26	27	28	29	30	31	32
C. Sleeve length	in	23.5	24	24.5	25	25.5	26	26.5

PPE CUSTOMIZATION PROGRAM

- Style and colour as per Client's requirements can be produced.
- Computerized embroidered company logo, name badges & job designation.
- EN 471 High-Viz Reflective Tape



COMPONENTS



PACKING

Each piece in polythene cover and 20 pcs. in seaworthy carton

A PRODUCT OF



Doc. Control:	Rev.:	Date:
	3.2	April 6, 2016

This Article Data Sheet (ADS) is designed and produced by FLOWTRONIX (FT) covered under the intellectual property law. Any reproduction in whole or in part is strictly prohibited without written approval. FT IW 7006-3.2