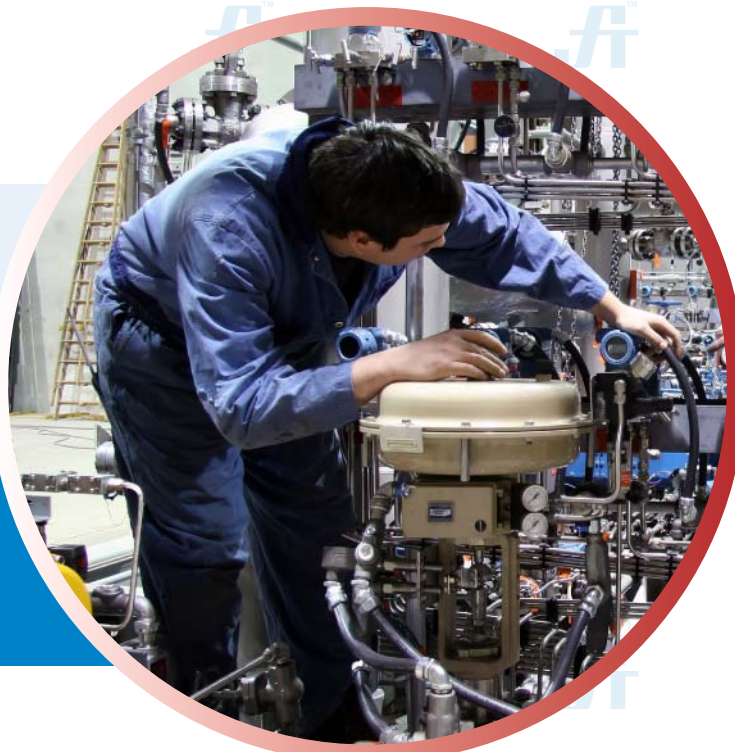




TWO PIECE WORKWEAR

Art. No.: SHIRT-0502FS01 /PANT-0402FS01

FT-Falcon Super® is made of durable and comfortable 100% Super Fine Cotton, that are best for on and off the job. Absorbent and soft garment providing the best comfort throughout working hours. Shirt has two chest pockets, button front closures, full sleeves with button cuffs. Pants has two pockets on sides, two on rear with flap on right, brass zipper closure. Very well stitched and bar tacked on all stress points.



DESCRIPTION

Fabric: 100% Super Fine Cotton

Weight: 200 - 220 gsm/sq. mtr.

- Fully Mercerized
- Heavy Duty Garment
- Fast Colour
- Cool & Comfortable

100%
SUPER FINE
COTTON

STYLE & DESIGN

SHIRT

- Two chest pockets, one with safety flap on left pocket
- Extra-long tails and extra room in body for easy movement
- Collar band and full front placket
- Pencil slot in left pocket
- Pressed and autoclaved
- Hanging hook on collar

PANTS

- Two Lower front swing pockets
- Two rear pockets, one with safety flap on right
- One tool pocket
- Auto lock brass zipper
- Elasticated waist with belt loops
- All stress point bar tacking & reinforcement

URSPEC

PPE CUSTOMIZATION
PROGRAM

COLORS



Red



Navy Blue



Medium Blue



Orange



Khaki



Yellow



Grey



Bottle Green

SIZES

Small Medium Large Extra Large 2XLarge 3XLarge 4XLarge

Doc. Control:	Rev.:	Date:
	3.2	April 6, 2016

This Article Data Sheet (ADS) is designed and produced by FLOWTRONIX (FT) covered under the intellectual property law. Any reproduction in whole or in part is strictly prohibited without written approval. FT IW 7016-3.2



A PRODUCT OF



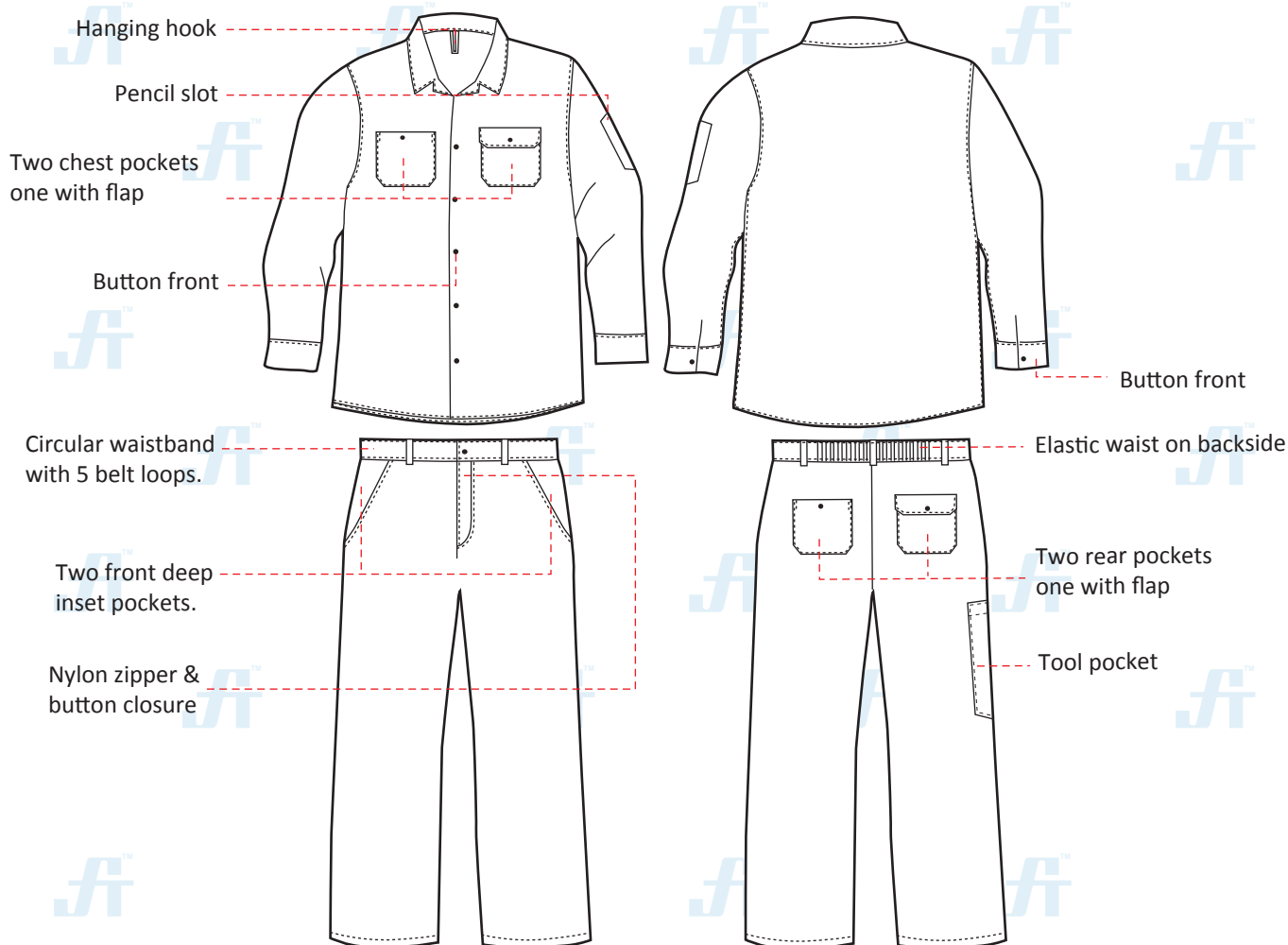


TWO PIECE WORKWEAR

Art. No.: SHIRT - 0501FS01

PANT - 0401FS01

STYLE & DESIGN SPECIFICATIONS



COLOURS



SIZE CHART

S	M	L	XL	2XL	3XL	4XL
36-38	40-42	44-46	48-50	52-54	56-58	60-62

PPE CUSTOMIZATION PROGRAM

- Style and colour as per Client's requirements can be produced.
- Computerized embroidered company logo, name badges & job designation.
- EN 471 High-Viz Reflective Tape



COMPONENTS



Button & Nylon zipper closure

Concealed elastic waist on backside.

Adjustable cuff



PACKING

Each piece in polythene cover and 20 pcs. in seaworthy carton

Doc. Control:	Rev.: 3.2	Date: April 6, 2016
---------------	-----------	---------------------

This Article Data Sheet (ADS) is designed and produced by FLOWTRONIX (FT) covered under the intellectual property law. Any reproduction in whole or in part is strictly prohibited without written approval. FT IW 7016-3.2

