



TWO PIECE WORKWEAR

Article No.: Shirt - 0504FT01 Pant - 0404FT01

Supremo® Workwears is made of 65% Polyester and 35% Cotton. Pant & Shirt that is lightweight, breathable, comfortable and soft garment providing the best comfort throughout working hours. Available in most basic colours and can be customized as per client requirements.



DESCRIPTION

Fabric: 65% Polyester, 35% Cotton
Weight: 180 gsm/sq. mtr.

- Fully Mercerized
- No Color Bleeding
- Fast Colour
- Cool & Comfortable

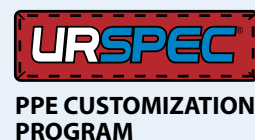
STYLE & DESIGN

SHIRT

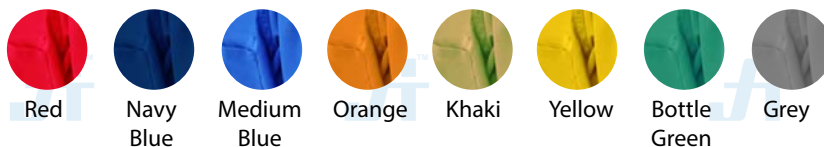
- Two chest pockets, one with safety flap on left pocket
- Extra-long tails and extra room in body for easy movement
- Collar band and full front placket
- Pencil slot in left pocket
- Pressed and autoclaved
- Hanging hook on collar

PANTS

- Two Lower front swing pockets
- Two rear pockets, one with safety flap on right
- One tool pocket
- Auto lock brass zipper
- Elasticated waist with belt loops
- All stress point bar tacking & reinforcement



COLORS



SIZES

Small Medium Large XLarge 2X Large 3X Large 4X Large



Doc. Control:	Rev.:	Date:
	3.2	April 6, 2016

This Article Data Sheet (ADS) is designed and produced by FLOWTRONIX (FT) covered under the intellectual property law. Any reproduction in whole or in part is strictly prohibited without written approval. FT IW 7020-3.2





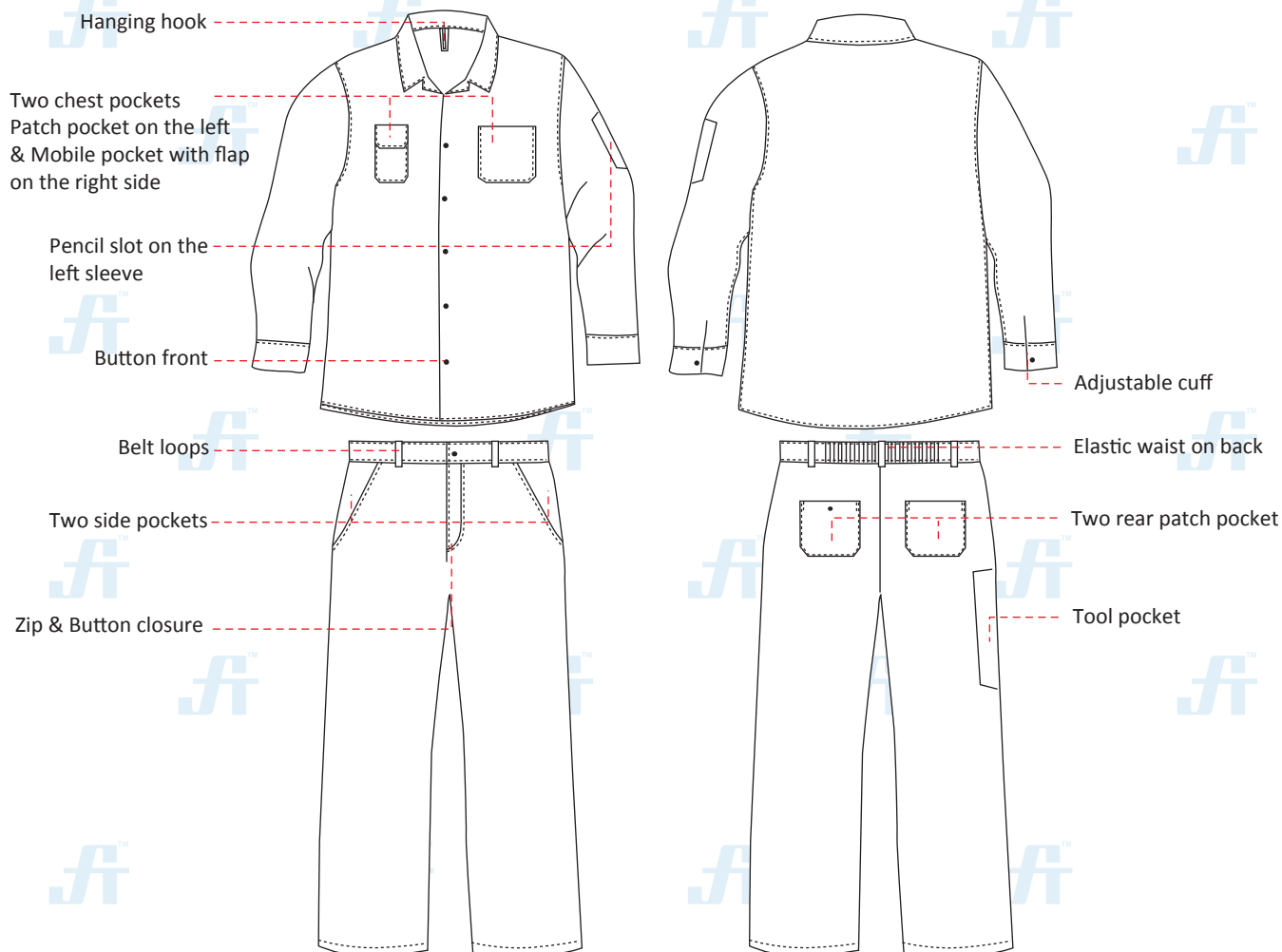
STYLE & DESIGN SPECIFICATIONS

TWO PIECE WORKWEAR

Article No.:

Shirt - 0504FT01

Pant - 0404FT01



COLOURS



SIZE CHART

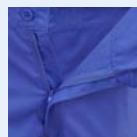
S	M	L	XL	2XL	3XL	4XL
36-38	40-42	44-46	48-50	52-54	56-58	60-62

PPE CUSTOMIZATION PROGRAM

- Style and colour as per Client's requirements can be produced.
- Computerized embroidered company logo, name badges & job designation.
- EN 471 High-Viz Reflective Tape



COMPONENTS



Button & Nylon zipper closure



Concealed elastic waist on backside.



Adjustable cuff

PACKING

Each piece in polythene cover and 20 pcs. in seaworthy carton

Doc. Control:	Rev.: 3.2	Date: April 6, 2016
---------------	-----------	---------------------

This Article Data Sheet (ADS) is designed and produced by FLOWTRONIX (FT) covered under the intellectual property law. Any reproduction in whole or in part is strictly prohibited without written approval. FT IW 7020-3.2



A PRODUCT OF

