



PREMIUM WORK SHIRT (FULL SLEEVES)

Article No.: 0549SA01

This Premium Work Shirt offers both comfort and durability making this one tough work shirt. Fully mercerized, wrinkle resistant, durable press finish and very breathable. This premium cotton shirt is the perfect for a wide variety of jobs. It's has two piece lined collar and a button closure at the neck. Available on various colors and customization options.



COMPOSITION

Fabric: 65% Cotton, 35% Polyester

Weight: 180 - 240 GSM

This Work Shirt is the ultimate answer for long life durability at work.

STYLE & DESIGN

- Two chest pocket with flap and button closure
- Left chest pocket with pen slot
- 7 Button front plus two extra button
- Button: 4 hole plastic pearlised (18L)
- All stress point are bar tacked
- Straight cut hem
- Two button cuff
- Superior color retention

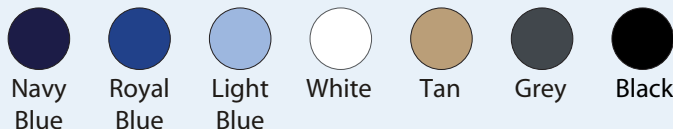
SIZES

Small to 4XL



PPE CUSTOMIZATION PROGRAM

COLORS



Doc. Control:	Rev.:	Date:
	3.2	April 7, 2016

This Article Data Sheet (ADS) is designed and produced by FLOWTRONIX (FT) covered under the intellectual property law. Any reproduction in whole or in part is strictly prohibited without written approval. FT IW 7043-3.2

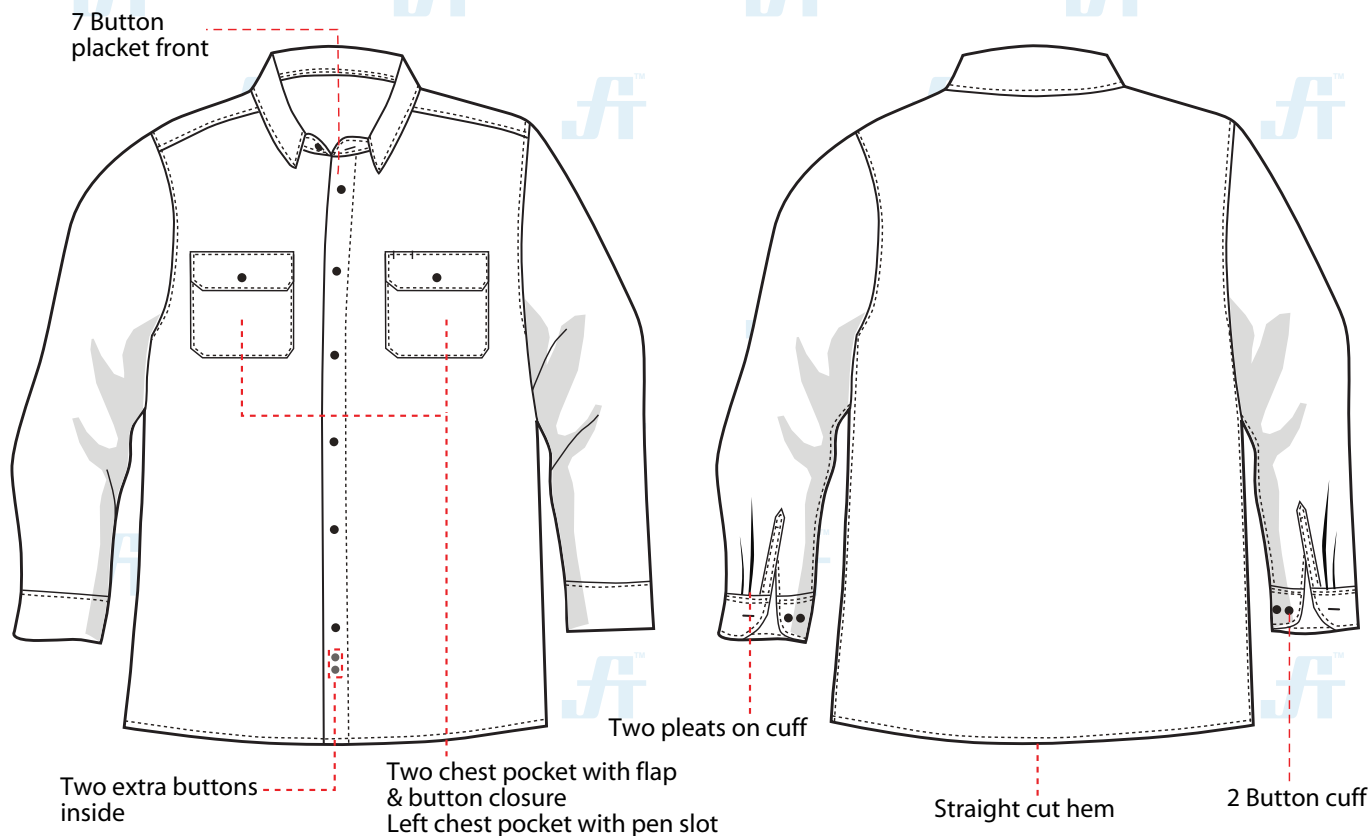




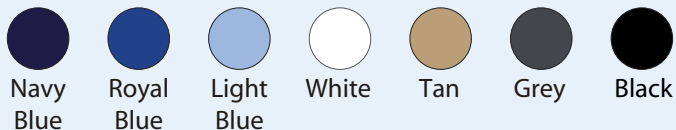
PREMIUM WORK SHIRT (FULL SLEEVES)

Article No.: 0549SA01

STYLE & DESIGN SPECIFICATIONS



COLORS



SIZE CHART

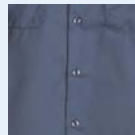
Small Medium Large XLarge 2XLarge 3XLarge 4XLarge

PPE CUSTOMIZATION PROGRAM



- Style and colour as per Client's requirements can be produced.
- Computerized embroidered company logo, name badges & job designation.
- EN 471 High-Viz Reflective Tape

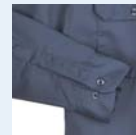
COMPONENTS



Buttons front closures



Two chest pocket with flap button closure



Adjustable button cuffs

PACKING

Each piece in polythene cover and 20 pcs. in seaworthy carton

Doc. Control:	Rev.: 3.2	Date: April 7, 2016
---------------	-----------	---------------------

This Article Data Sheet (ADS) is designed and produced by FLOWTRONIX (FT) covered under the intellectual property law. Any reproduction in whole or in part is strictly prohibited without written approval. FT IW 7043-3.2

