



EXECUTIVE CHEF COAT

Article No.1904SA478

Executive Chef Coats are built to last and stand up to the most demanding culinary environments. These chef coats are designed to wash, wear & perform, while offering the same style, fit and functionality you expect from Chef works.

Constructed with 7.0 oz., 60/40 cotton/poly twill fabric. This is a full sleeve, mandarin collar, double-breasted chef coat with and pearlized buttons.

The Executive Chef Coat has a left chest patch and thermometer pockets. Available in black & white.



COMPOSITION

Fabric: 65% Polyester, 35% Cotton Twill
Weight: 7.0 Oz

STYLE & DESIGN

- Double-breasted front
- 12 Pearlized button closure
- Black contrast piping on seam edges
- Thermometer pocket on left sleeves
- Drop shoulder with yoke
- French cuffs
- Black piping
- Left chest inset pocket
- Stain-resistant finish
- Lightweight
- Durable construction
- Center back length: 29.5 inches

COLORS



SIZES

XS to 5XL



Doc. Control:	Rev.:	Date:
	3.2	April 7, 2016

This Article Data Sheet (ADS) is designed and produced by FLOWTRONIX (FT) covered under the intellectual property law. Any reproduction in whole or in part is strictly prohibited without written approval. FT IW 7091-3.2

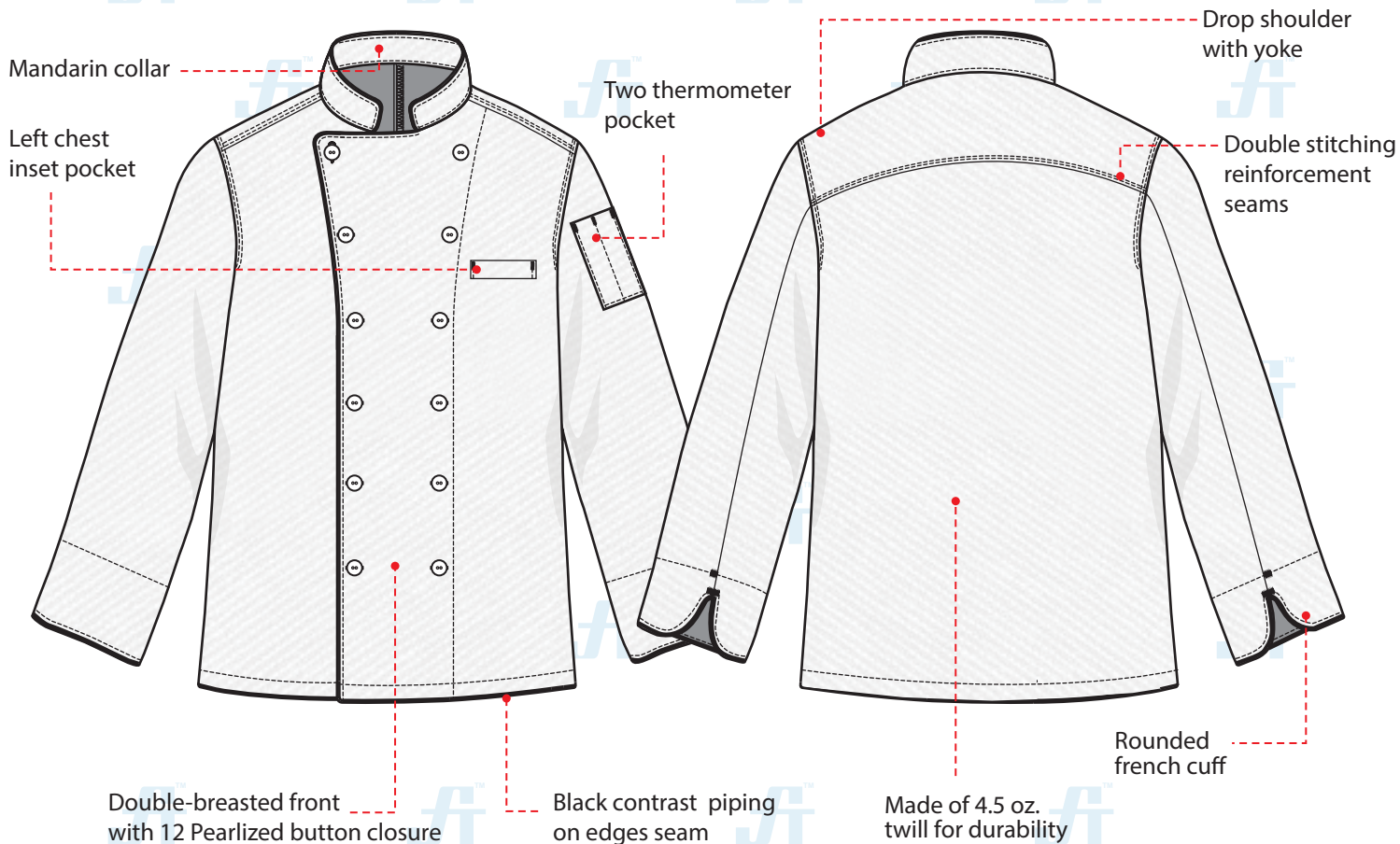




EXECUTIVE CHEF COAT

Article No.: 1904SA478

STYLE & DESIGN SPECIFICATIONS



COLORS



SIZE CHART

XS S M L XL 2XL 3XL 4XL 5XL

PPE CUSTOMIZATION PROGRAM



- Style and colour as per Client's requirements can be produced
- Name badge/ Designation/Logo placement

PACKING

Each piece in polythene cover and 20 pcs. in seaworthy carton

Doc. Control:	Rev.: 3.2	Date: April 7, 2016
---------------	-----------	---------------------

This Article Data Sheet (ADS) is designed and produced by FLOWTRONIX (FT) covered under the intellectual property law. Any reproduction in whole or in part is strictly prohibited without written approval. FT IW 7091-3.2

