



SA525 WOMENS SCRUB PANTS

Article No. 39213SA525

Women scrub pants is a perfect combination of function and fashion! Built with two side pockets, one multi-function cargo pocket and one patch packet at rear. Full elastic waistband with drawstring. The easy-care, wash and wear fabric provides you with superior softness and incredible comfort all shift long. Available in variety of colors and customization options.



COMPOSITION

Fabric: 55% Cotton, 45% Polyester Poplin
Weight: 160 GSM

STYLE & DESIGN

- Womens comfort fit
- Straight legs with 1.5" fully elasticated waistband
- Twill tape drawstring on waist
- Two sides patch pocket, rounded opening
- Subdivided cargo pocket on the right leg
- Second layer pocket on cargo
- Back hip patch pocket
- Flare legs, slim through hips and thighs
- Lightweight & Durable construction
- 3" slit on both sides of bottom hem

COLORS



SIZES

XXS S M L XL 2XL 3XL

Perfect Match with Womens Scrub Tops

Article Number

38213SA520

Sizes

XXS to 3XL



PPE CUSTOMIZATION PROGRAM



A PRODUCT OF



Doc. Control:	Rev.:	Date:
	3.2	April 7, 2016

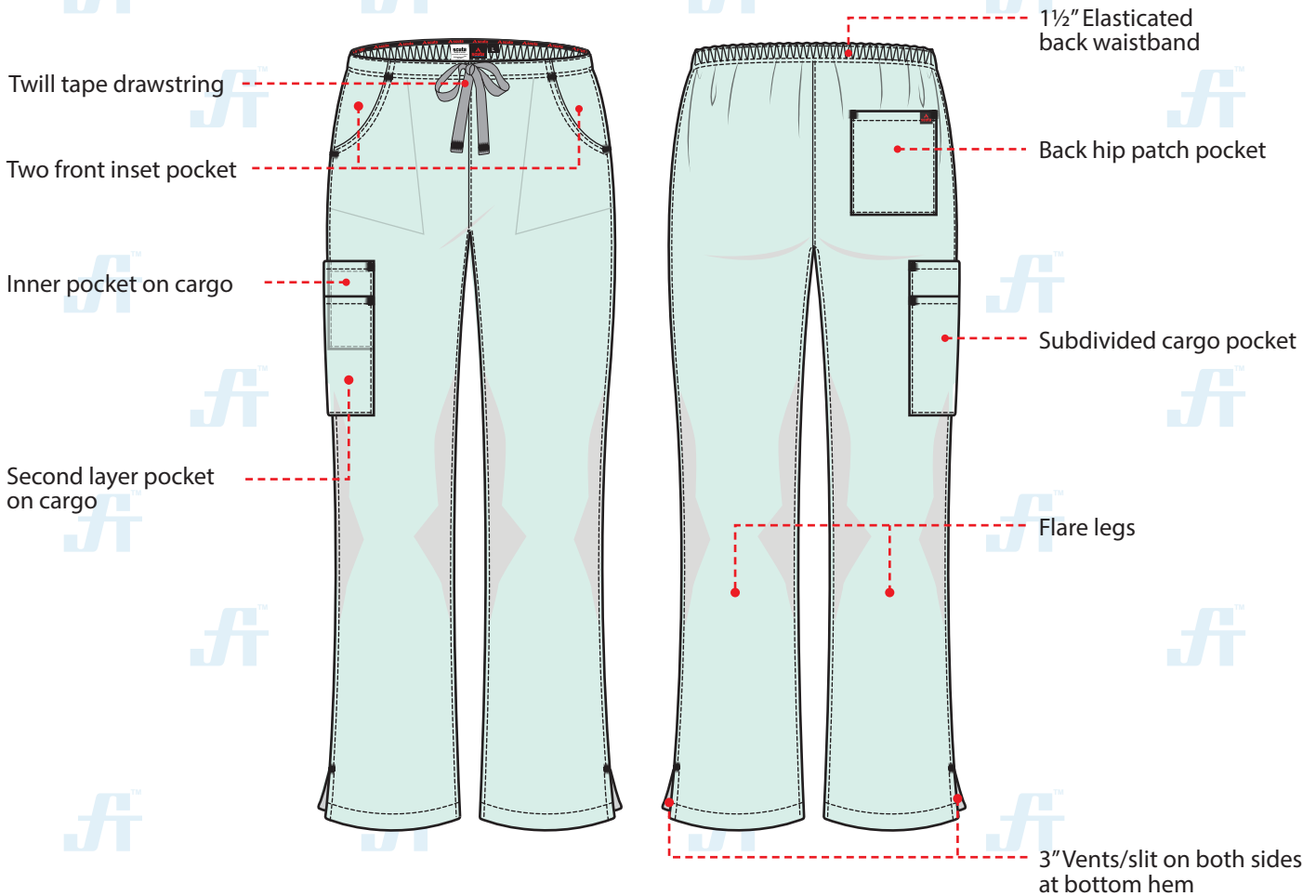
This Article Data Sheet (ADS) is designed and produced by FLOWTRONIX (FT) covered under the intellectual property law. Any reproduction in whole or in part is strictly prohibited without written approval. FT IW 7111-3.2



SA525 WOMENS SCRUB PANTS

Article No. 39213SA525

STYLE & DESIGN SPECIFICATIONS



COLORS



SIZE CHART

XXS S M L XL 2XL 3XL

PPE CUSTOMIZATION PROGRAM



- Style and colour as per Client's requirements can be produced
- Name badge/ Designation/Logo placement

PACKING

Each piece in polythene cover and 20 pcs. in seaworthy carton

Doc. Control:	Rev.: 3.2	Date: April 7, 2016
---------------	-----------	---------------------

This Article Data Sheet (ADS) is designed and produced by FLOWTRONIX (FT) covered under the intellectual property law. Any reproduction in whole or in part is strictly prohibited without written approval. FT IW 7111-3.2

